

NACRA 17 CLASS



The following amendments to the Class Rules have been approved to be effective 22 March 2013 :

C.5 Portable Equipment

C.5.1 OPTIONAL

Delete Present Rule and insert:

- “(a) Timing devices.
- (b) One compass with bracket, which may include a timing device. If electronic, only a compass with heading, heading memory and timing functions is permitted.
- (c) Spare parts and tools, removable for weighing.
- (d) Camera recording equipment and attachments, where permitted by the Notice of Race and/or Sailing Instructions and removable for weighing. “

C.6.4 WEIGHT

Delete Present Rule and insert:

“The weight of the **boat** in dry condition shall be minimum 143 kg with the aluminium mast.

The weight shall be taken including:

hull platform, mast, hull appendages, bowsprit and all equipment and **rigging** as listed in Appendix section H and I,

excluding: the tiller extension, **mainsail** and battens, **jib** and battens, gennaker and all **portable equipment** listed in C.5.1. “

C.7 Hull

C.7.1 Modifications

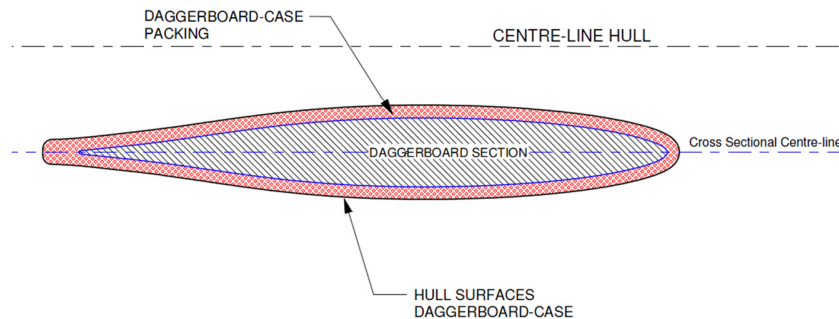
– Delete Present Rule (e) and insert:

“(e) The **daggerboard** case packing may be replaced by any material. The top **daggerboard** case packing shall have a minimum thickness of 3 mm. The bottom **daggerboard** case packing shall have a minimum thickness of 2 mm. The minimum thickness of the **daggerboard** case packing does not apply within 30 mm of leading edge and trailing edge of the **daggerboard** case in the fore and aft direction.

The **daggerboard** case packing shall not extend for more than 35 mm into the trunk from the top or bottom, or beyond the surface defined by straight edge held perpendicular to the centreline and dragged along the bottom of the **hull**.

The **daggerboard** case packing shall be permanently fixed and shall not operate the function to trim the **daggerboard** at any time. The intersection between the hull surfaces and the packing shall be remained clearly visible for inspection.

NACRA 17 CLASS



Advisory note: nowhere is re-finishing, fairing of the **daggerboard case - hull** surface intersection permitted except to facilitate localised repair in this rule. Provided that the essential shape, characteristics and function of the original component are not affected, the N.S. may use templates to verify compliance with these limitations.“

“C.8 DAGGERBOARDS”

Amendment : Heading rename: “C.8 HULL APPENDAGES”

C.8.1 MAINTENANCE

Amendment: (a) First line, after ‘daggerboards’ insert: “and rudders”,

Add:

- “(d) The **rudder** upper casting packing may be replaced by any material to fit the rudder arm and blade.
- (e) The **rudder** lower casting packing may be replaced by any material to fit the blade.
- (f) The tiller extension may be replaced without any restrictions as to design and material.”

C.8.2 REPAIR

Amendment: Second paragraph, first line, delete: ‘daggerboards’ and insert: “hull appendage”

C.8.3 LIMITATIONS

Amendment: (a) Delete Present Rule and insert:

“Only one starboard **daggerboard**, one starboard **rudder**, one port **daggerboard** and one port **rudder** shall be used in an event, except when lost or damaged beyond repair. Any replacement shall only be made with the approval of the Race Committee. “

NACRA 17 CLASS



C.9 RUDDERS

Amendment : Delete: 'C.9 Rudders' and renumber: 'C.10 Beams' as: 'C.9 Beams'

C.9.1(e) MODIFICATIONS

Amendment : Delete Present Rule (C.10.1(e)) - note see new C.9.3(a)

C.9.2 MAINTENANCE AND REPAIR

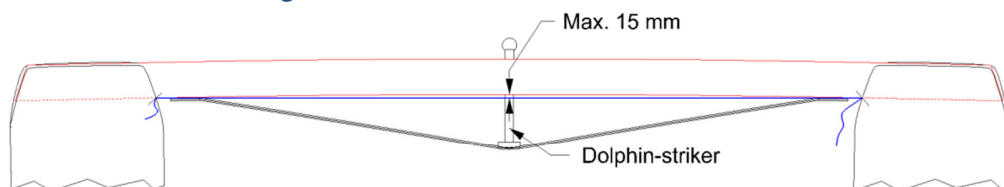
Amendment: Delete Present Rule (C.10.2(b)), renumber and insert as: C.9.2(b):
"Beam bolts are Nacra licensed suppliers only."

NEW C.9.3

Add: "(a) USE

	Minimum	Maximum
Front cross beam curvature		15mm

Front cross beam curvature is the greatest distance between:
the cross beam
and a straight line from the port and starboard bottom points of the beam at the intersection with the hull
taken at 90° to the straight line with the dolphin-striker tensioned, the mast removed, the cross beam horizontal and both crossbeams tightened into their beam beddings.



C.10 BEAMS

Amendment : Delete 'C.10 BEAMS' and renumber: 'C.11 RIG' as: 'C.10 RIG'

C.10 RIG

C.10.1 MODIFICATIONS.

Add:

- “(e) Boom outhaul clamcleat CL277 fitting may be removed and the system may be changed to a rope only trim system.
- (f) No additional holes may be made in the spar sections, except for:
 - (1) Boom outhaul end two additional holes may be drilled with a max. diameter of 8 mm. “

NACRA 17 CLASS



C.10.7 STANDING RIGGING

(a) MODIFICATION, MAINTENANCE AND REPAIR

(1)

Amendment in table:

‘Trapeze lines’ Dyneema Sk75/80 or polyester, diameter 3.0 mm \pm 0.2 mm diam.”

(2)

Amendment: insert as bullet points:

- Blue Wave Spanner (Mono race tuning – MRT-Calibrated AISI 316.
- C.S. Johnson 12-100 Stay Adjuster – Calibrated.

C.10.8 RUNNING RIGGING

(a) Modification, maintenance and repair.

Delete present rule and insert:

- (1) The **trapeze** system arrangement is open and may be modified to include an adjustable hook height system provided that the attachment methods by shockcord to the hull and front cross beam are not changed.
- (2) The Cunningham trim line may be led through a block, with a maximum sheave diameter of 22 mm, attached to the trapeze system.
- (3) A shackle or snap-shackle may be fitted at the end of the main sheet where it attaches the mainsail.
- (4) A shackle or snap-shackle may be fitted at the end of the jib sheet where it attaches to the clew board of the jib.
- (5) Shock cords and rings may be added to ropes. The shock cords shall have a maximum diameter of 5 mm.
- (6) The Gennaker tackline inboard end block may be fitted to the Gennaker strap eye or Trampoline laces.
- (7) Mast rotation line may be modified to a continuous system.
- (8) **Running rigging** may be replaced and shall comply as specified in Appendix section I.

Amendment: renumber: ‘C12 SAILS’ as: ‘C.11 SAILS’

NACRA 17 CLASS



Appendix Section H - Manufactured Part List

Mast

Cunningham Pivoting HK 291

Amendment : "Or Spinlock PXR0206/VP"

Boom

Clamcleat Outhaul CL277

Amendment: Add under options: "May be removed - C.10.1(e)"

Mainsail

Light batten set, Amendment add: "(top 4 battens)"

Medium batten set, Amendment add: "(complete set)"

Heavy batten set, Amendment add: "(top 4 battens)"

Appendix Section I – Rigging List

Amendment: Delete all figures in 'length' and 'diameter' columns, with the exception of 'Main Halyard' and 'Righting Line'.

Mainsheet with split tail 1:10

Amendment: delete: "±1mm diam. and ±2m rope length"

Mainsheet with split tail 1:12

Amendment: delete: "±1mm diam. and ±2m rope length"

Gennaker Halyard core+cover

Amendment: delete: "±1mm diam. and ±2m rope length"

Trapeze Line

Delete present text and insert:

	Qty	Length	diam.	Material	Options or tolerances
Trapeze lines	4	-	2.5	1 x 19 stainless steel wire	±0.2 mm diam. Shall be. either 1x19 stainless steel wire, Dyneema sk75/80 or polyester or a combination.
			3.0	Dyneema SK75/80 or polyester	

END
